

## Configuring Technicolor TG588 Bridge Mode (also known as Modem Only Mode)

### Introduction

In April 2016 BT stopped providing VDSL Modems with new FTTC Connections. In April 2017 BT will stop supporting/replacing BT Openreach Modems already in the field.

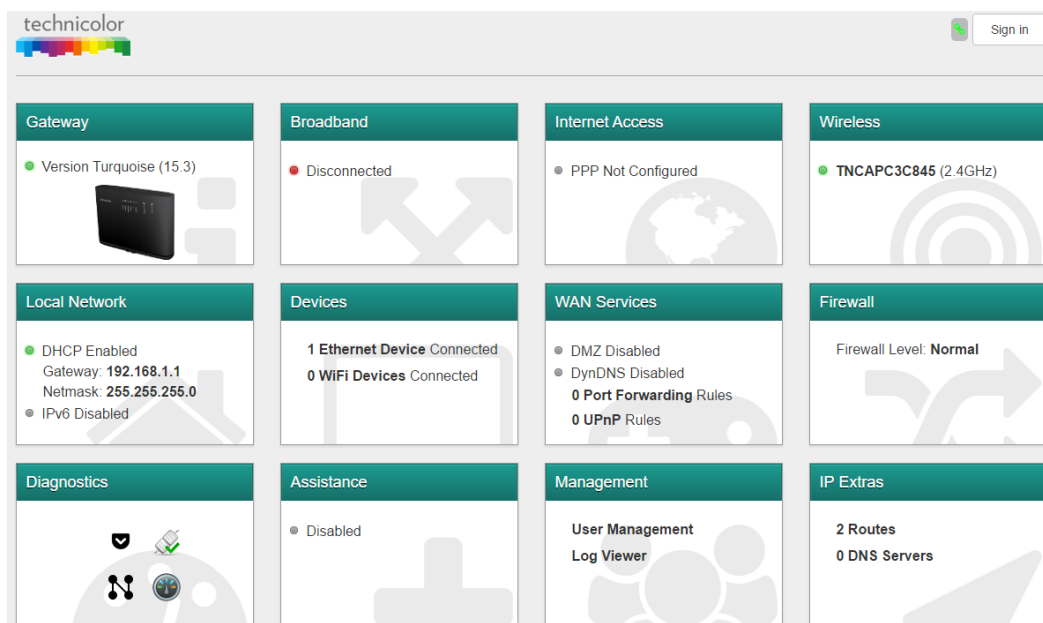
There are many Combination Modem/Routers on the market that have passed BT's mandatory Modem Compatibility Testing, but what if you do not want a combination modem router? What if you want something with the same functionality as the late BT modem, for instance to put in-line with a firewall or bonding device?

Cerberus recommends using a low cost Modem/Router and switching off the Router functions. This is called either Modem Only Mode, or Bridge Mode. In this mode a single device on the wired LAN can establish a PPPoE connection in the same way that the BT Modem allowed.

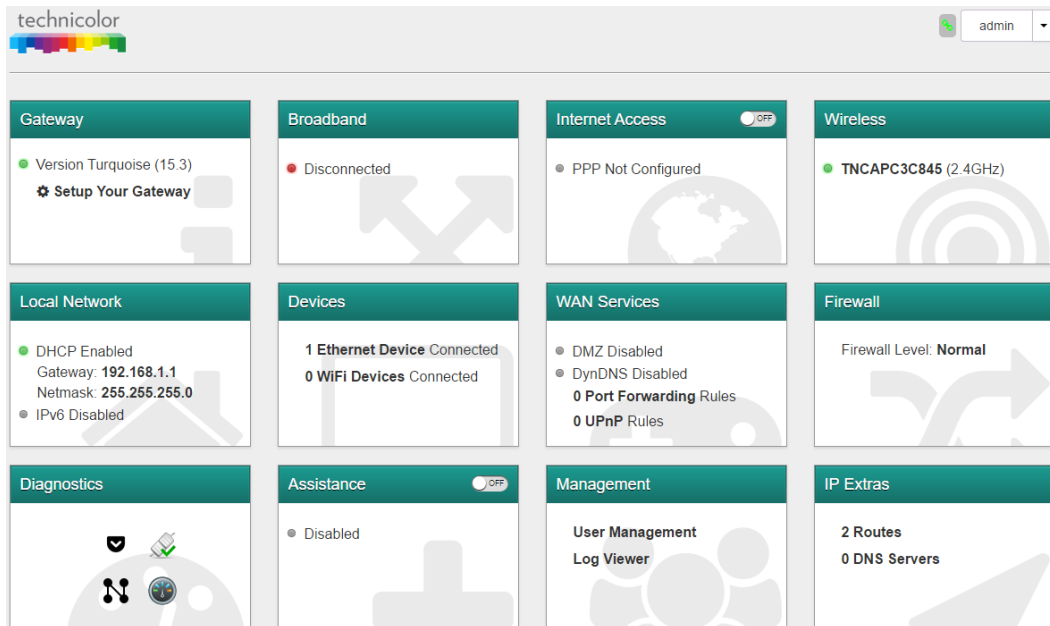
This guide covers doing this using the Technicolor TG588. It may be applicable to other recent Technicolor equipment with the same Interface.

### Setup Bridge Mode

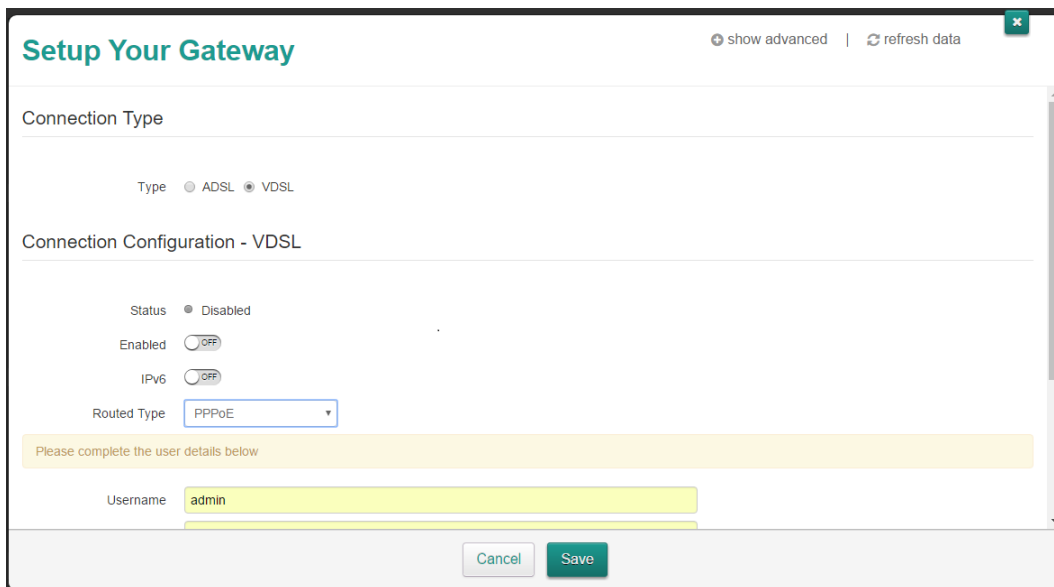
1. Power up and connect your TG588 . We assume that you are connected to it via an Ethernet cable. In this guide we will deactivate the Wifi function so do not connect via that method! You need not connect the modem to your phone line at this point.
2. Open a Web Browser and log in to the Web Interface of the Router. By default this is <http://192.168.1.1>



3. If you see the option to “Sign In” in the top right hand corner then you are not logged in to the router. Click the Sign In button and you will be prompted for a username and password. By default both of these are “admin” . The router may prompt you to change the default password. This is good practice. Once signed in you will see a new option “Setup Your Gateway” in the top left hand corner.



4. When you click “Setup Your Gateway” you will see the following screen:



5. Change "Routed Type" to Bridge, Ensure Connection Type is set to VDSL, VLAN is Enabled and VLAN ID is set to 101.

**Setup Your Gateway** show advanced | refresh data

Connection Type

Type  ADSL  VDSL

Connection Configuration - VDSL

Status  Disabled

Routed Type

VLAN Enabled

VLAN ID

6. Click Save. The screen should change to say "Changes saved successfully" and the Cancel/Save Buttons will change to "Close".

**Setup Your Gateway** show advanced | refresh data

Connection Type

Type  ADSL  VDSL

Connection Configuration - VDSL

Changes saved successfully

Routed Type

VLAN Enabled

VLAN ID

7. Click Close. Observe that the Internet Access tile now shows "Gateway in Bridge Mode".

Congratulations you have now put the router in bridge mode.

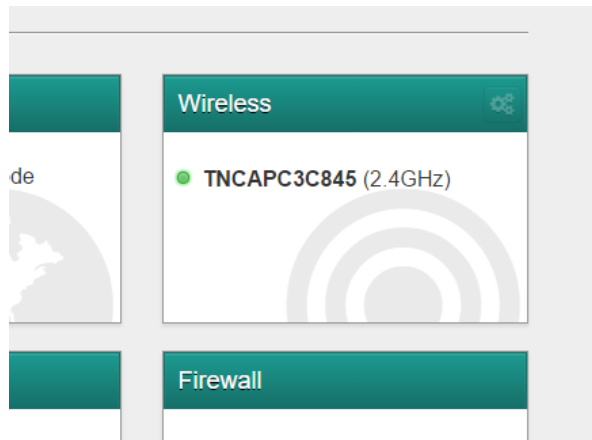
The screenshot displays the Technicolor router's web management interface. At the top left is the Technicolor logo, and at the top right is a user menu with the name 'admin'. The interface is organized into a 3x4 grid of panels:

- Gateway:** Shows 'Version Turquoise (15.3)' and a 'Setup Your Gateway' button.
- Broadband:** Shows a red dot and the text 'Disconnected'.
- Internet Access:** Shows 'Gateway in Bridge Mode'.
- Wireless:** Shows 'TNCAPC3C845 (2.4GHz)'.
- Local Network:** Shows 'DHCP Enabled', 'Gateway: 192.168.1.1', 'Netmask: 255.255.255.0', and 'IPv6 Disabled'.
- Devices:** Shows '1 Ethernet Device Connected' and '0 WiFi Devices Connected'.
- WAN Services:** Shows 'DMZ Disabled', 'DynDNS Disabled', '0 Port Forwarding Rules', and '0 UPnP Rules'.
- Firewall:** Shows 'Firewall Level: Normal'.
- Diagnostics:** Contains several status icons.
- Assistance:** Shows a 'Disabled' status with a toggle switch set to 'OFF'.
- Management:** Shows 'User Management' and 'Log Viewer'.
- IP Extras:** Shows '2 Routes' and '0 DNS Servers'.

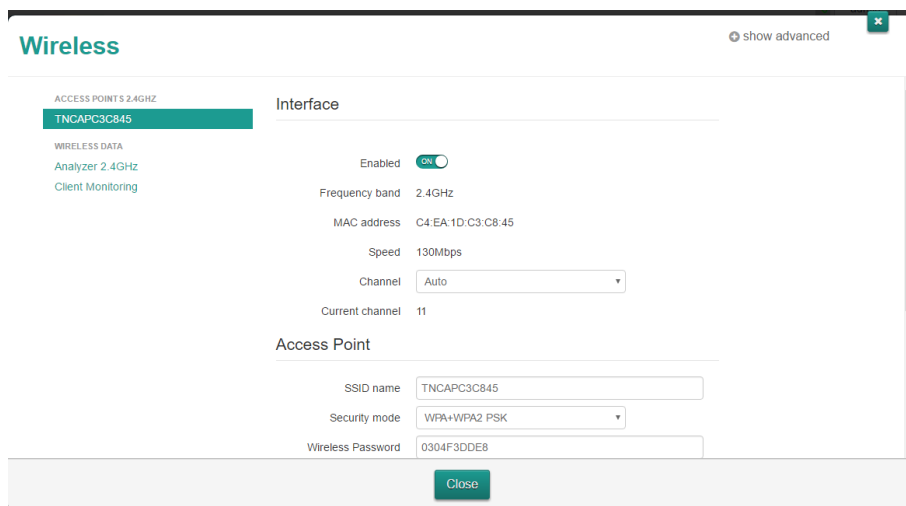
We strongly suggest that you proceed to the next section and disable Wifi.

## Disable Wifi

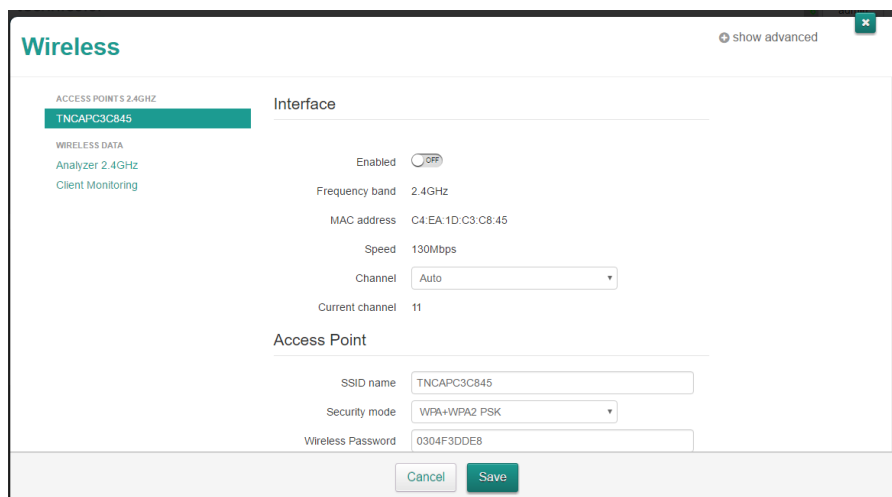
1. Assuming you are still logged into the web Interface from the previous section, roll your mouse over the "Wireless" tile in the top right hand corner. You will see some cogs appear in the top right hand corner of the tile.



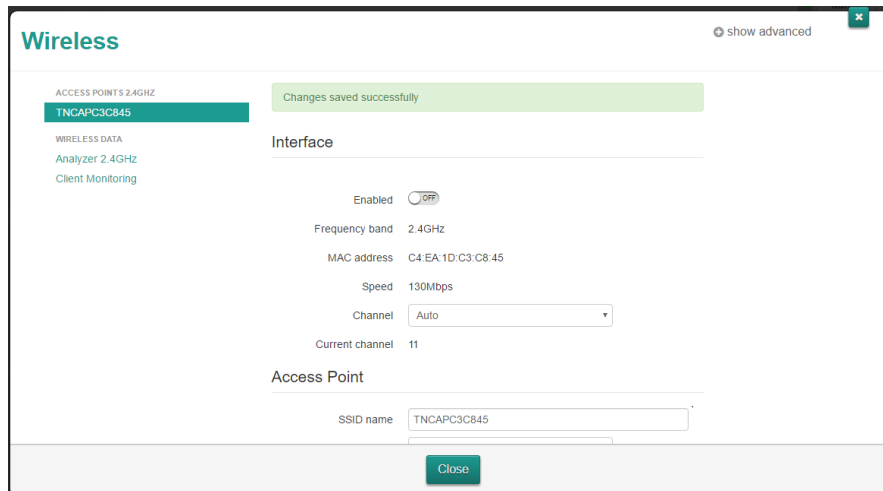
2. Click the cogs and you will see a new screen appear:



3. Click on the "Enabled" switch. The screen will change:



4. Click "Save" and the screen will change:



5. Click "Close" and you will return to the main screen.

## Connect the Phone Line & your Router/Firewall

If you have followed the above instructions your TG588 will now behave just like the BT Modem.

Connect the WAN interface of your Router or Firewall to any ONE of the Yellow Ethernet ports on the TG588.

Connect the phone line to the grey RJ11 port on the TG588. Don't forget to use Filters if your Master Socket doesn't have an xDSL Faceplate.

## Further Assistance

We hope that this document has been useful. If you need further help please email [support@cerberusnetworks.co.uk](mailto:support@cerberusnetworks.co.uk) or phone 0345 257 1335.